

## Exponential Functions Assignment

An exponential function is a function in the form of  $y = ab^x$ , where  $a \neq 0$ ,  $b > 0$  and  $b \neq 1$ . It is not a linear function.

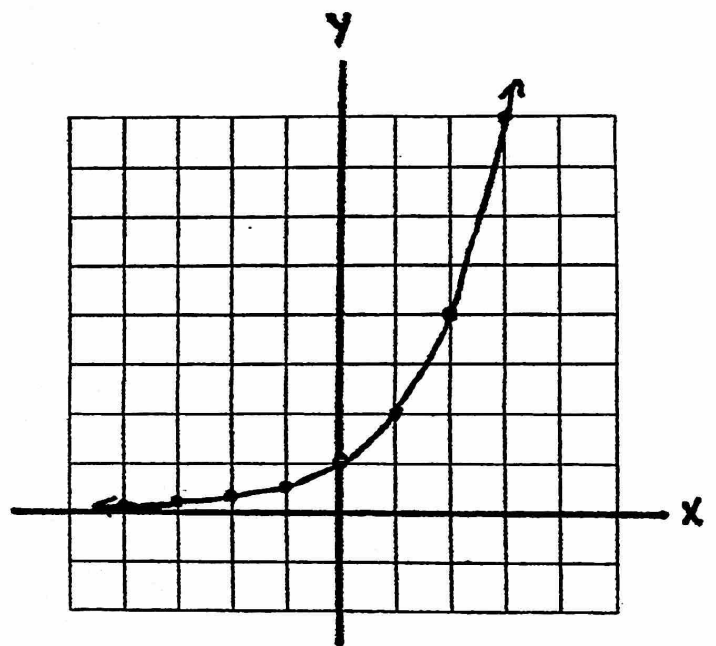
Some examples of exponential functions are:

$$y = 2^x$$

$$y = 5^x$$

$$y = 3 \cdot 4^x$$

Here is the graph of  $y = 2^x$ :



### Assignment:

Make a chart of values for the following exponential functions and graph them (on graph paper).

1)  $y = 3^x$

2)  $y = 4^x$

3)  $y = 2 \cdot 3^x$

4)  $y = (-1) \cdot 2^x$